

Laboratory Collection

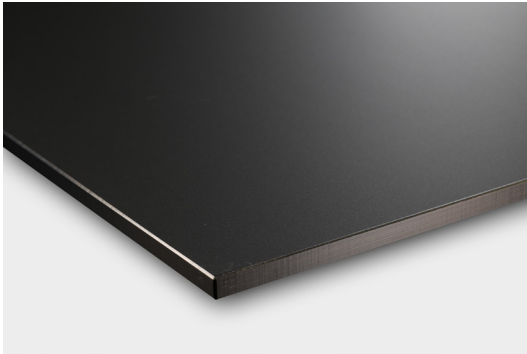


For you to create



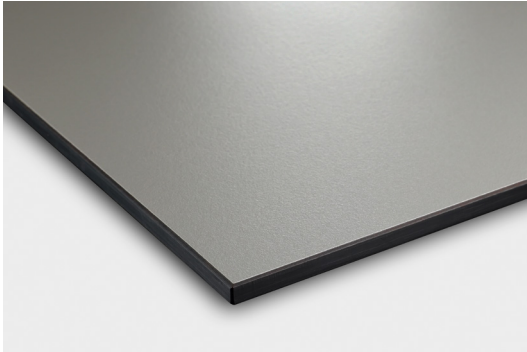
Fundermax





Max Compact Interior

Designed for areas where impact and wear resistance are crucial.



Max Compact Interior Plus

Offers a higher resistance against aggressive cleaning agents, with a surface suitable for high-frequency areas.



Max Compact Resistance²

Ideal for chemical laboratories and other environments requiring a highly resistant and hygienic surface.



0558 FH
White Punto



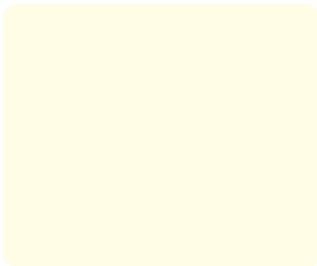
0559 FH
Punto Pastel Grey

Properties*

All our products are manufactured in line with EN438 and EN312.

- Easy to clean
- Scratch resistant
- Ease of installation
- Durable
- Impact resistant
- Food grade
- Excellent chemical resistance

*All properties and information about our products you will find on our website www.fundermax.com



0085 FH
White



0074 FH
Pastel Grey

Sustainable

100% recycled content using eco-friendly energy

- 100% Recycle Paper Products.
- 100% Self-Generated Energy.
- Supplying Electricity too 1000's of homes and businesses.



0075 FH
Dark Grey



0706 FH
Glacier Blue



Max Compact Interior				Dimensions					
Decor Group	Decor No.	Surface Finish	Name	LRV	Nearest NCS-Code	Nearest RAL no.	3670 x 1630 mm	2800 x 1854 mm	2800 x 1300 mm
Plain colours					Thickness		16	16	6
U	0074	FH	Pastel Grey	0.48	S 2500-N	7038	●	●	●
U	0075	FH	Dark Grey	0.24	S 5000-N	7037	●	●	
U	0085	FH	White	0.85	S 0502-G50Y	9010	●	●	●
U	0706	FH	Glacier Blue	0.50	S 2010-B	5024	●	●	
Material Decors									
M	0558	FH	White Punto	0.68			●	●	
M	0559	FH	Punto Pastel Grey	0.43			●	●	

All items above are stocked in the UK.
No minimum order quantities.

FH – Fine Hammer Embossed

The classic, which can be used in practically all areas, offers the optimum combination of resistance and easy cleanability – and is therefore one of the most popular surfaces.

Note: All items are suitable for horizontal and vertical use.

LRV = Light Reflectance Value

Decor types

U = Colour
M = Material

For more options and further technical information about applications and our products, such as digital print (Individual-decor), Max Compact Interior with white core, and many more, as well as for further decors and our delivery programme please visit our website www.fundermax.com



Scan QR code to
view complete
laboratory collection'



Sample Service

Fundermax GmbH
A-9300 St. Veit/Glan
Klagenfurter Strasse 87-89
Tel: + 43 (0) 5/9494-0
Fax: + 43 (0) 5/9494-4210
sales.uk@fundermax.biz
www.fundermax.com

MEMBER OF *Constantia* INDUSTRIES



We already cover half of our core paper requirements entirely with recycled core paper, which we obtain primarily from our Fundermax subsidiary Ranheim Paper & Board in Norway, a manufacturer of paper and board products.

